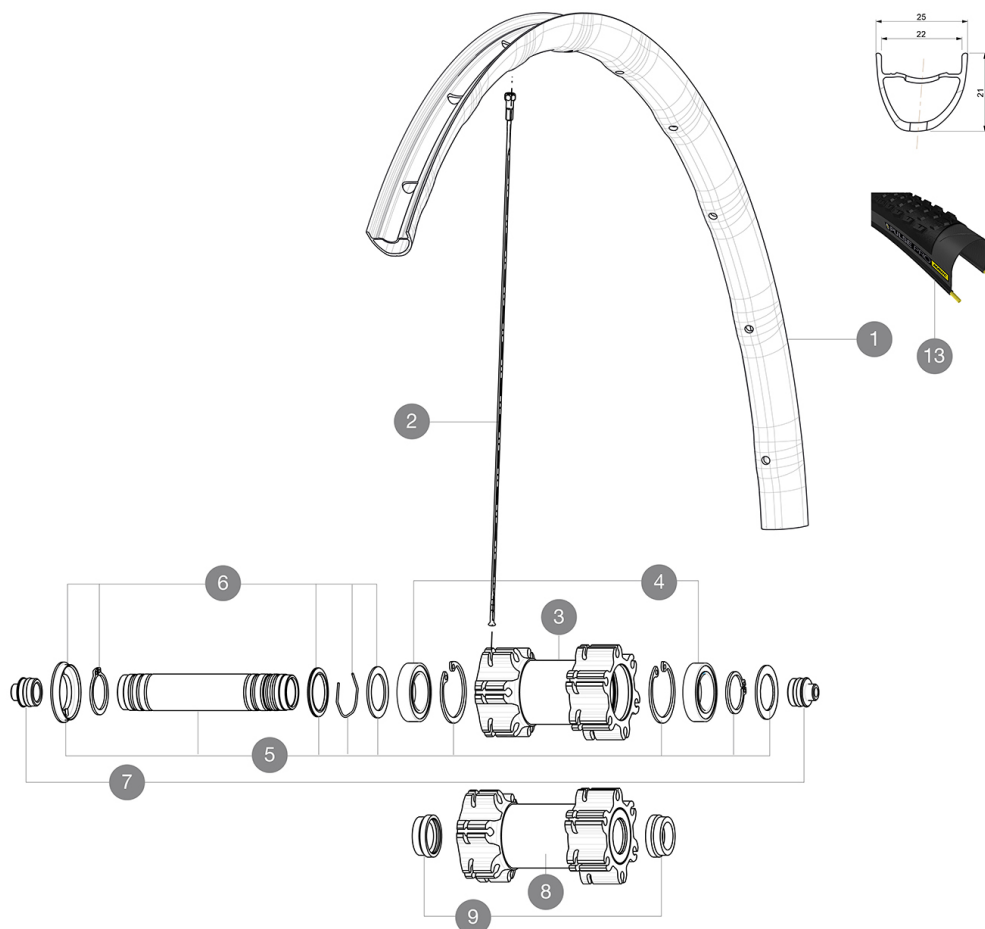


ASTM CATEGORY 3 : offroad with jumps less than 61cm
Recommended weight limit : 120kg
Recommended tire sizes: 28 mm to 62 mm (1.1" to 2.5")

REFERENCES WHEELS

F69751	XmElite27.5FiBoostWTS BK	P83161	XmaxElite27.5PrWTS Rd
F69752	XmElite27.5FiBoostWTS Red	F55001	XmElite27.5FiWTS BK
F69761	XmElite27.5FiSpWTS BK	F55002	XmElite27.5FiWTS Red
P83151	XmaxElite27.5PrWTS BK		



RIMS



Ø VALVE HOLE (MM): 6,5 :

1	V3140115	SET Front/Rear rim XMAX ELITE 27,5" 22TSS red
1	V3120115	SET Front/Rear rim XMAX ELITE 27,5" 22TSS black

SPOKES

2	V2381101	12 FRT + REAR NON-DRIVE SIDE SPOKES 277mm CROSSRIDE TUBELESS 27,5
---	----------	---

MOYEUX






3	N/A	HUB BODY
3	N/A	HUB BODY
4	99688501	BEARING KIT 9/15 D6T HUB
5	V2371101	KIT FRONT QRM AXLE 100mm/BOOST 110mm
6	V2370301	FRONT AUTO ADJUST.PLAY KIT 15MM AXLE
7	B4104401	15mm FT Road Axle Adapters 16
8	N/A	HUB BODY
8	N/A	HUB BODY
9	V2371301	YELLOW AXLE SUPPORTS FRONT BOOST 110mm FOR SELF ADJUSTING
10	N/A	AXLE SYSTEM
11	M40771	BEARING KIT FOR LEFTY HUB
12	36709301	ASSEMBLY KIT CROSSROC SUPERMAX

TYRES

13	39243121	Pulse Pro 27,5" 2.1
13	39243132	Pulse Pro 27,5" 2.25

MAVIC Crossmax Elite

DELIVERED WITH

1 bottle of Mavic Sealant (355 466 01) 1	
BR101 quick releases (M40350 firt, M40351 rear road, M40352 rear MTB) 1	
Front QR adapters (996 941 01 for MTB or B41 043 01 for road) 1	
Rear 12x142mm adapters for ITS4 and TS2 (308 593 01 for ITS4, 329 650 01 for TS2) 1	
UST valve and accessories (129 838 01)	
Tubeless rim tape	

COMPATIBILITY

Freewheel: Shimano/Sram, convertible to XD with optional driver body	
Front axle: convertible from 15mm thru axle to Quick Release with included adapters	
Rear axle: 12mm thru axle, convertible to Quick Release with included adapters	

Specifications

RIMS

- **Material** : Mxstal
 - **Joint** : SUP
 - **Drilling** : traditional
 - **Weight reduction** : ISM 4D
 - **Valve hole diameter** : 6.5 mm
 - **Tire** : UST Tubeless and tubetype
 - **Internal width** : 22 mm
 - **ETRTO size 27.5"** : 584x22ss
 - **ETRTO size 29"** : 622x22ss
- Hookless profile
Use with Mavic Tubeless Tape

SPOKES

- **Material** : steel
- **Shape** : straight pull, bladed, double butted
- **Count** : 24 front and rear
- **Lacing** : front and rear crossed 2

WHEEL HUB

- **Front and rear bodies** : aluminum
 - **Axle material** : aluminum
- Sealed cartridge bearings
- **Freewheel** : ITS-4 alloy

VERSIONS

- **Color** : Black or Black/Red
 - **Disc standard** : 6 Bolts only
 - **Hub width** : Boost (front 110, rear 148) or Non-Boost (front 100, rear 135/142)
- Lefty Supermax

WHEEL WEIGHTS

- Wheel weight
- Weight Front 27.5": 750
- Weight Front 29": 785