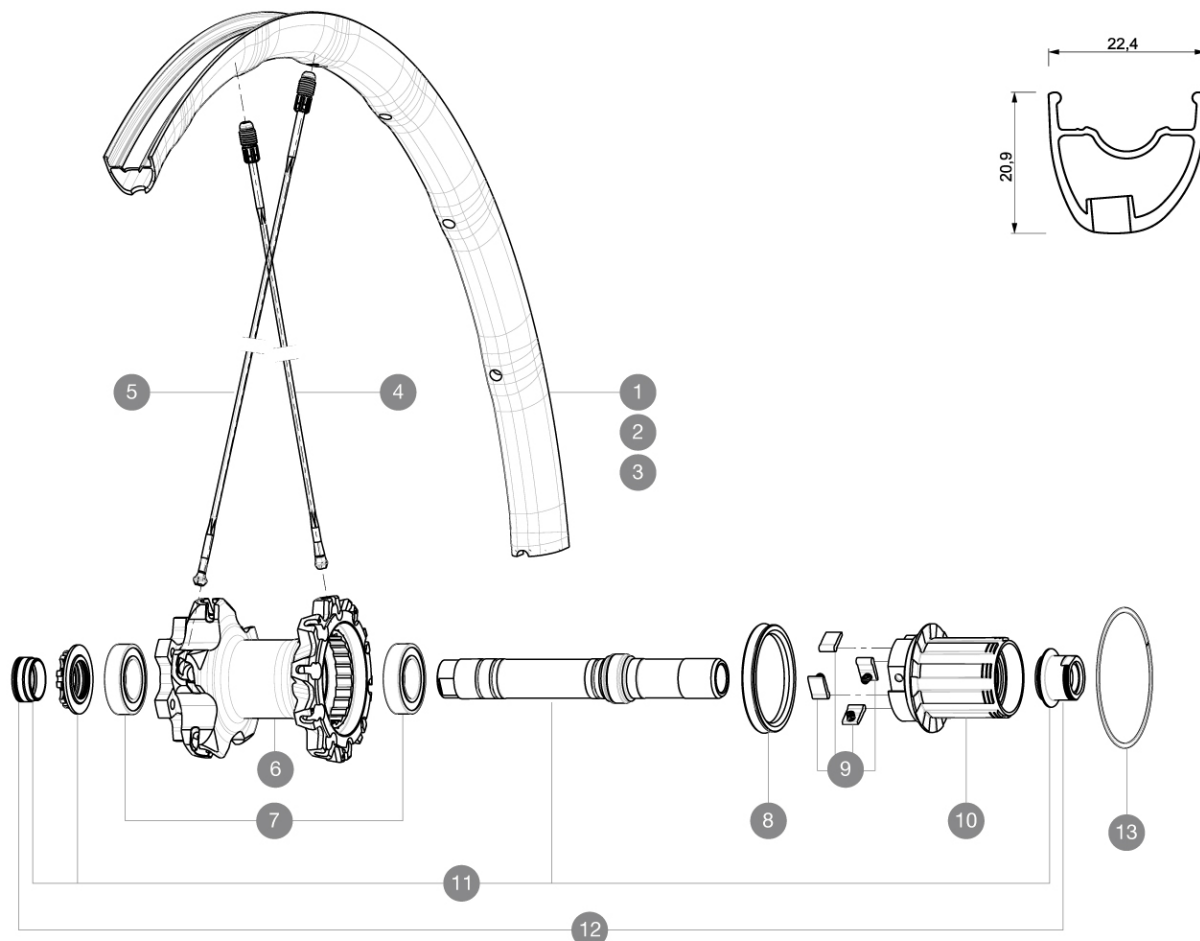


REFERENCES WHEELS

P50601	XmaxSLPro29PrWTS Black	R51802	XmaxSLProLtd29RrWTS Yellow
P50602	XmaxSLProLtd29PrWTS Yellow	R68701	XmaxSLPro290ffsetWTSBk
P65501	XmSLPro29PrSpXOffsetWTSBk	R68702	XmaxSLProLtd290ffsetWTSYellow
P65502	XmSLProLtd29PrSpXOffsetWTSYel	R75401	XmSLProLtd290ffsetNT135SMU
P76001	XmaxSLPro29PrXDWTS Black	R78501	XmaxSLPro29RrXDWTS Bk
P76002	XmaxSLProLtd29PrXDWTS Yellow	R78502	XmaxSLPro29RrXDWTS Ye
P77801	XmaxSLPro29Pr NT	R82701	XmaxSLPro29RrNT Bk
R51801	XmaxSLPro29RrWTS Black		



RIMS



Ø VALVE HOLE (MM): 6,5 :

1	V2310613	KIT REAR RIM CROSSMAX SL 2015 29"
2	V2313713	KIT REAR RIM CROSSMAX SL PRO LIMITED YELLOW 29"
3	V2313813	KIT REAR RIM CROSSMAX SL PRO LIMITED OFFSET YELLOW 29"
3	V2311913	"KIT REAR RIM CROSSMAX SL 29"" OFFSET (SMU CANNONDALE)"

SPOKES

4	35113801	"10 SPOKES M7/7 DRV BLK CROSSMAX SLR 29"" 269,5mm"
5	35113701	"11 SPOKES M7/7 FRT/NDRV BLK CROSSMAX SLR 29"" 299,5mm"

MOYEURS

6	N/A	HUB BODY
7	M40076	FRONT HUB 6903 BEARINGS
8	99610701	ITS4 SEAL
9	99610601	ITS4 PAWLS KIT
10	35126001	ITS-4 FREEWHEEL BODY + SEAL 2013 (WITHOUT PAWLS)
11	30870401	REAR AXLE KIT ITS4 135mm D6T/DCL 2012
12	30872201	FORK REST ITS-4 135mm REAR AXLE 2012

13 30871801 ELASTIC RING 56mm diam.

MAVIC *Crossmax SL Pro 29***DELIVERED WITH**

BX601 quick releases	
1 bottle of Mavic Sealant	
UST valve and accessories	
Front QR adapters	
Rear QR adapters	
Rear 12x142mm adapters	
Specific disc bolts	
Multifonction adjustment wrench	
User guide	

Specifications**RIMS**

- **Material** : Mactal
 - **Joint** : SUP
 - **Drilling** : Fore
- Disc brake specific profile
- **Weight reduction** : ISM 4D
 - **Valve hole diameter** : 6.5 mm
 - **Tyre** : UST Tubeless and tubetype
 - **Internal width** : 19 mm
 - **ETRTO size 26"** : 559x19C
 - **ETRTO size 650b/27.5"** : 584x19C
 - **ETRTO size 29"** : 622x19C
 - **ETRTO recommended tyre sizes** : 28mm to 62mm (1.1" to 2.5")

SPOKES

- **Material** : Zicral
- **Shape** : straight pull, bladed
- **Nipples** : Fore integrated aluminum
- **Count** : 20 front and rear
- **Lacing** : front crossed 2, rear Isopulse

WHEEL HUB

- **Front body** : carbon with aluminum flanges
 - **Rear body** : aluminum
 - **Axle material** : aluminum
- Adjustable sealed cartridge bearings
- **Freewheel** : ITS-4 alloy
- Shimano 11 speeds compatible
Sram XD Compatible (XX1-X01) with optional kit

WHEEL WEIGHTS

- Wheel weight
- Weight Rear 26" : 760
 - Weight Rear 27.5" : 805
 - Weight Rear 29" : 830