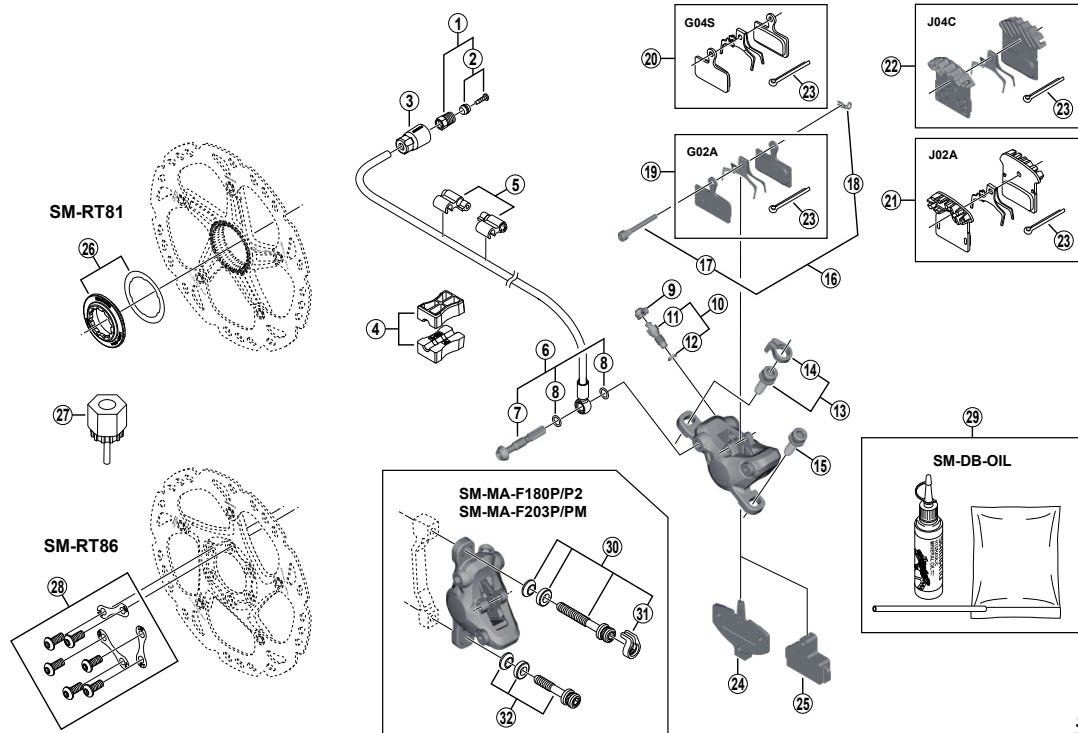


DEORE XT Disc Brake
BR-M8000 Brake Caliper
SM-BH90-SB Brake Hose

SM-RT81 Disc Rotor/Center Lock
SM-RT86 Disc Rotor/6-Bolt



BR-M9020
 BR-M785

ITEM NO.	SHIMANO CODE NO.	DESCRIPTION	INTERCHANGEABILITY	
1	Y8JA98010	Connecting Bolt Unit	A	A
2	Y8JA98020	Olive & Connector Insert	A	A
3	Y8JA07000	Cover	A	B
4	Y8H198030	TL-BH61 Shimano original tool (2 pcs.)	A	A
5	Y83098040	SM-HANG Hose Supporter A & B	A	A
6	Y8JA98030	Banjo Bolt & O-Ring	B	A
7	Y8JA04000	Banjo Bolt	B	A
8	Y8SY28000	O-Ring	A	A
9	Y8B214000	Bleed Nipple Cap	A	A
10	Y8CL98050	Bleed Nipple & Seal Ring	A	A
*	Y8CL24200	Bleed Nipple	A	A
12	Y8B511001	O-Ring for Bleed Nipple	A	A
13	Y8DS98010	Caliper Fixing Bolt (M6 x 18.7) & Snap Ring	B	A
14	Y8C511000	Snap Ring	B	A
15	Y8C509020	Caliper Fixing Bolt (M6 x 18.7)	B	A
16	Y8JZ98010	Pad Axle & Snap Retainer	B	A
17	Y8JZ05000	Pad Axle	B	A
18	Y8J716000	Snap Retainer	A	A
19	Y8LW98020	Resin Pad (G02A) & Spring w/Split Pin	A	B
20	Y8MY98010	Metal Pad (G04S) & Spring w/Split Pin	B	B
21	Y8LW98040	Resin Pad (J02A) w/Fin & Spring w/Split Pin	A	B
22	Y8LW98030	Metal Pad (J04C) w/Fin & Spring w/Split Pin	A	B
23	Y8DB06100	Split Pin	B	B
24	Y8J709000	Pad Spacer	A	A
25	Y8J712000	Bleeding Spacer	A	A
26	Y8K198010	Lock Ring & Washer	A	A
27	Y12009230	TL-LR15 Lock Ring Removal Tool	A	A
28	Y8J298030	Rotor Fixing Bolt & Lock Washer	A	A
29	Y83998010	Mineral Oil Bleed Kit (50 ml)	A	A
30	Y8G498020	Caliper Fixing Bolt Unit (M6 x 37.9) for SM-MA-F180P/P2	B	A
	Y8J498010	Caliper Fixing Bolt Unit (M6 x 40.2) for SM-MA-F203P/PM		
31	Y81703000	Snap Ring	B	A
32	Y8G498030	Caliper Fixing Bolt Unit (M6 x 32.1) for SM-MA-F180P/P2	B	A
	Y8J498020	Caliper Fixing Bolt Unit (M6 x 34.4) for SM-MA-F203P/PM	B	A

A: Same parts.

B: Parts are usable, but differ in materials, appearance, finish, size, etc.

Absence of mark indicates non-interchangeability.

Specifications are subject to change without notice.

Apr. -2016-3857B

© Shimano Inc. I

SHIMANO