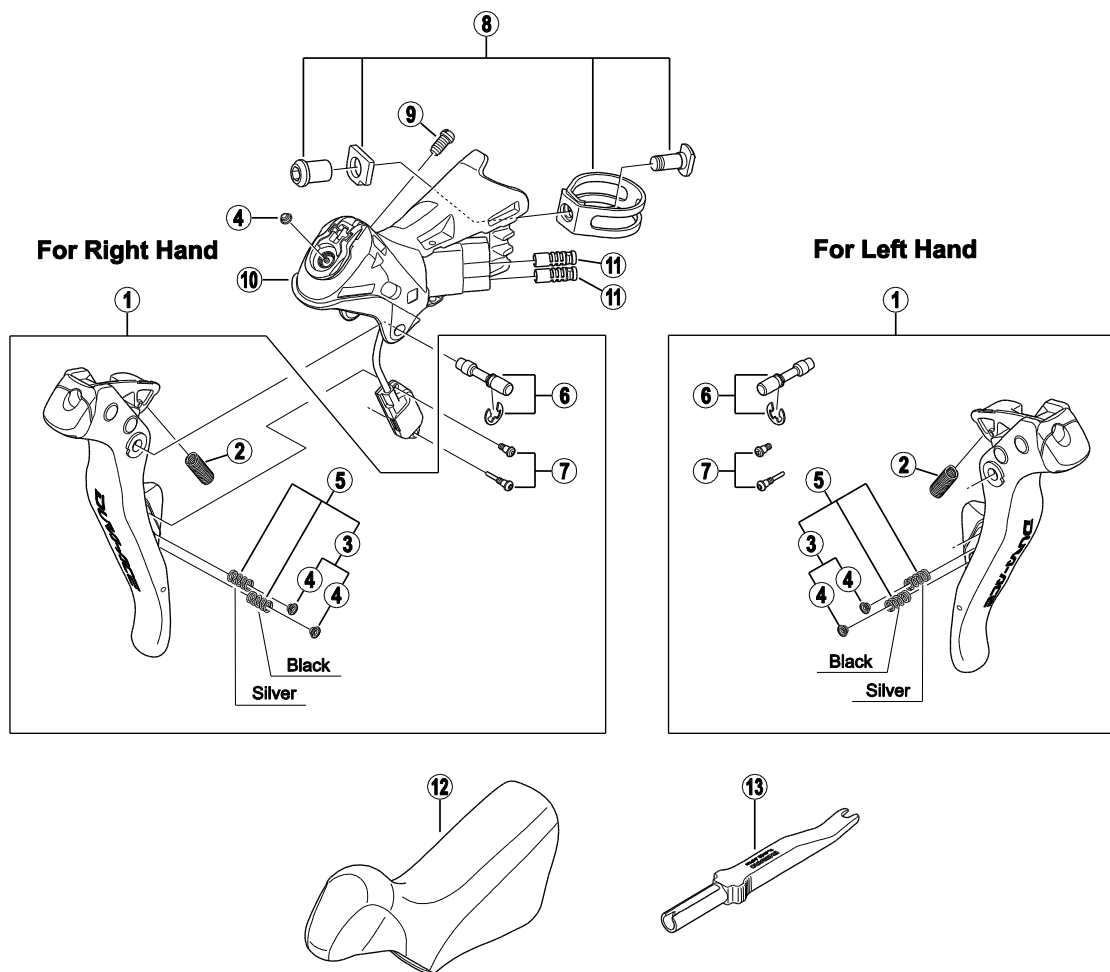


# DURA-ACE Dual Control Lever ST-9070



| ITEM NO. | SHIMANO CODE NO. | DESCRIPTION   | INTERCHANGEABILITY |         |         |
|----------|------------------|---|--------------------|---------|---------|
|          |                  |   | ST-6770            | ST-S705 | BL-S705 |
| 1        | Y6X098010        | R.H. Main Lever Assembly                            |                    |         |         |
|          | Y6X198010        | L.H. Main Lever Assembly                            |                    |         |         |
| 2        | Y6X039000        | Return Spring                                       |                    |         |         |
| 3        | Y6X098020        | SW Button (2 pcs.)                                  | A                  | A       |         |
| 4        | Y7F204000        | SW Button   | A                  | A       |         |
| * 5      | Y6X098080        | SW Button (2 pcs.) & Switch Spring (2 pcs.)         |                    |         |         |
| 6        | Y6X098030        | Lever Axle & E-Ring                                 |                    |         |         |
| 7        | Y6X098040        | Switch Unit Fixing Screw & Switch Lever A Guide Pin |                    |         |         |
| 8        | Y6X098050        | Clamp Band Unit (ø23.8 mm - ø24.2 mm)               |                    |         |         |
| 9        | Y6DZ49000        | Grip Adjusting Screw                                |                    | A       | A       |
| 10       | Y6X098060        | R.H. Bracket  |                    |         |         |
|          | Y6X198020        | L.H. Bracket  |                    |         |         |
| 11       | Y6VE15000        | Dummy Plug  | A                  | A       |         |
| 12       | Y6X098070        | Bracket Covers (Pair)                               |                    |         |         |
| 13       | Y6VE16000        | TL-EW02 Plug Tool                                   | A                  | A       |         |

A: Same parts.

B: Parts are usable, but differ in materials, appearance, finish, size, etc.

Absence of mark indicates non-interchangeability.

Specifications are subject to change without notice.

Apr.-2015-3332A

© Shimano Inc. I

# SHIMANO